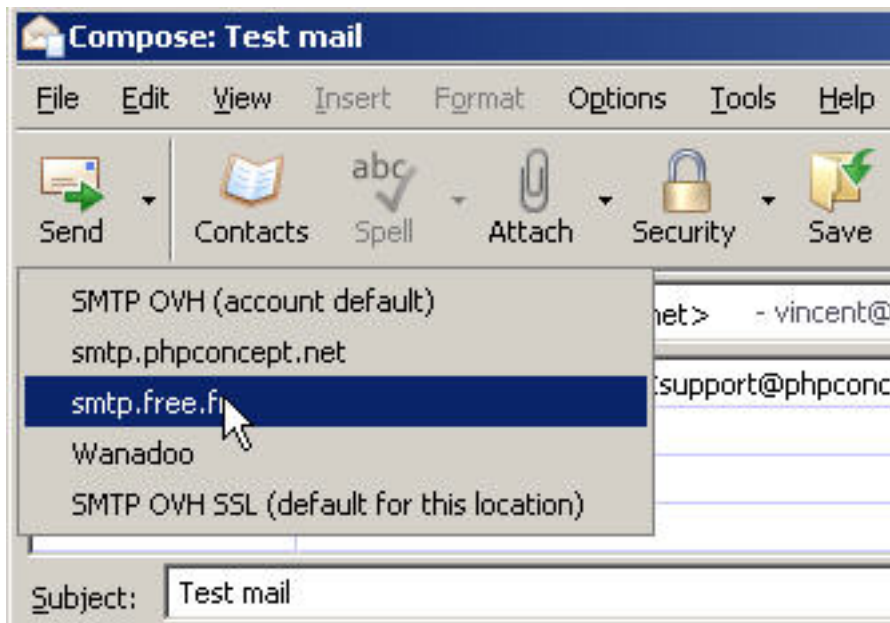


Using SMTP Control 0.5.0

By default, when SMTP Control is installed for the first time, the SMTP Control Swap feature is enabled. The SMTP Control Filtering feature is disabled for all the mail accounts. Which mean that each mail account has access to all the defined SMTP servers.

To use dynamic SMTP server to send a mail message, you just have to select the requested SMTP server from the drop-down menu that was added right to the "Send" button by SMTP Control.



In the picture above, you can see that :

- the default SMTP server for the current location is "SMTP OVH SSL"
- the default SMTP server for the "From:" email account is "SMTP OVH"
- the user decide to use the "smtp.free.fr" SMTP server for sending this email.

SMTP Control User Guide 0.5.0

Written by Vincent

Tuesday, 22 December 2009 18:58 - Last Updated Friday, 15 July 2011 12:45

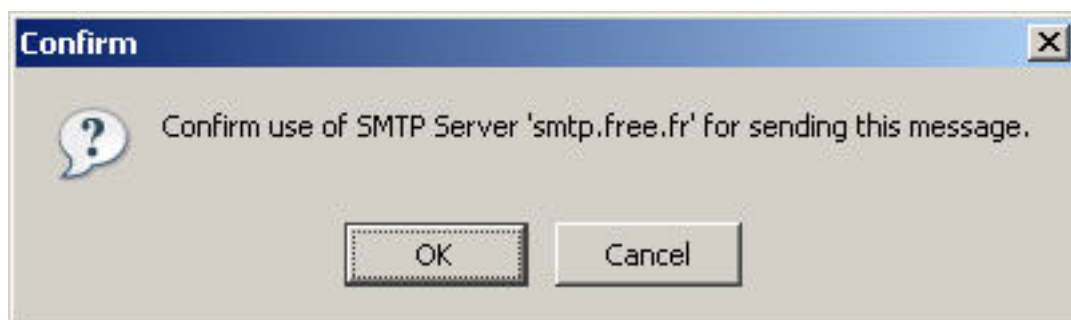
The listed SMTP servers are the available servers for the sending mail account ("From:" in the compose window). If you have configured SMTP filtering for the mail account only allowed SMTP servers for this mail account are proposed. If you change the sending account ("From:"), other SMTP servers might be proposed.

Following the SMTP Server name you can see in brackets :

- (account default) : Indicates the SMTP server statically defined for this email account,
- (default for this location) : Indicates the SMTP server defined for this location,
- (global default) : Indicates the SMTP server defined as default in thunderbird when no static configuration is made for the email account

In any case, when sending a mail message by the legacy "Send" button, or through the dynamic SMTP feature, SMTP Control will check if the SMTP server is in the allowed list for this email account. If not, an alert popup will warn you, and the email will not be send.

You can also, optionaly, asked for a confirmation, each time you select a dynamic SMTP server. This allow you to double-check your choice and decide if you want to really use a specific server or not.

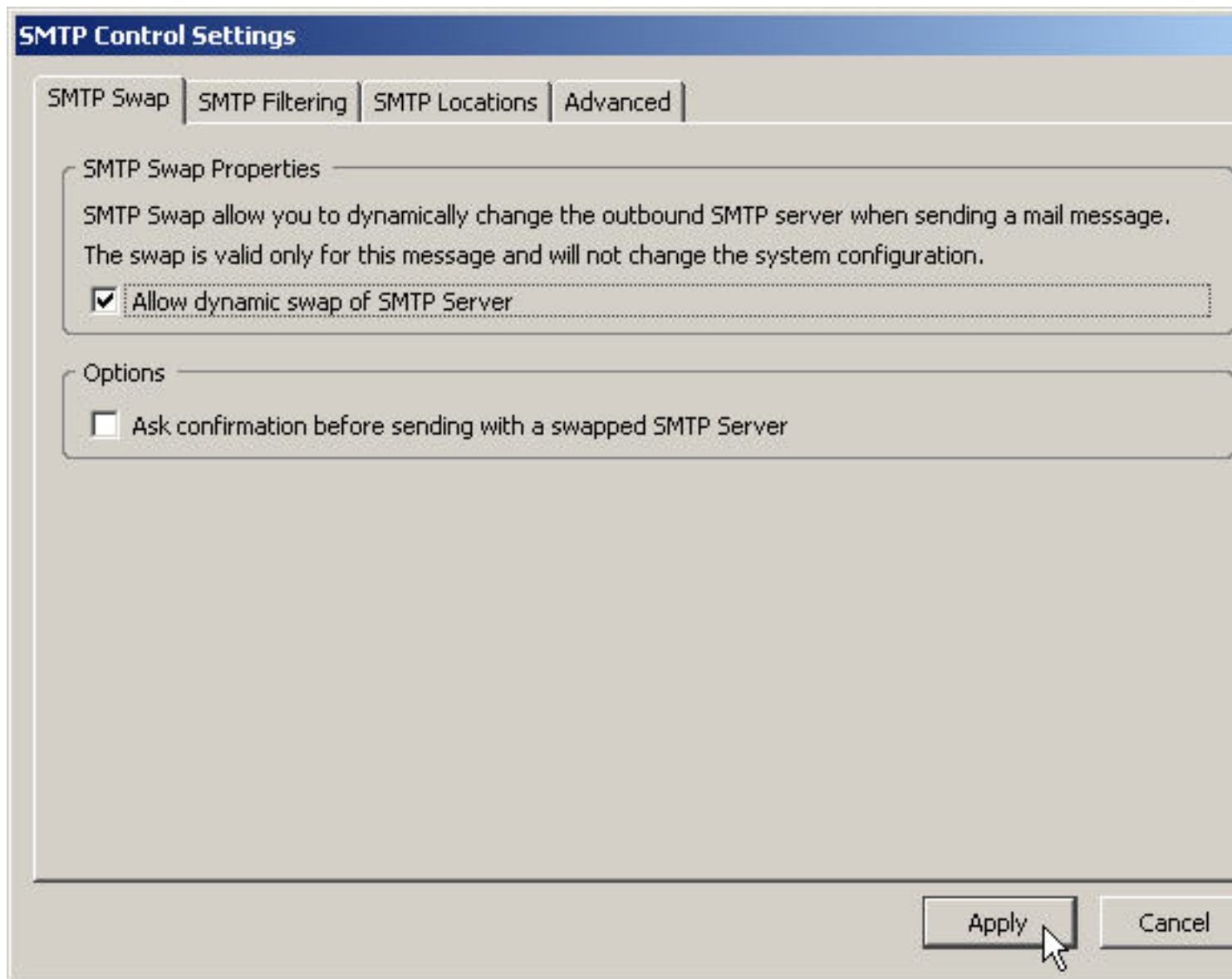


SMTP Control Settings

SMTP Swap

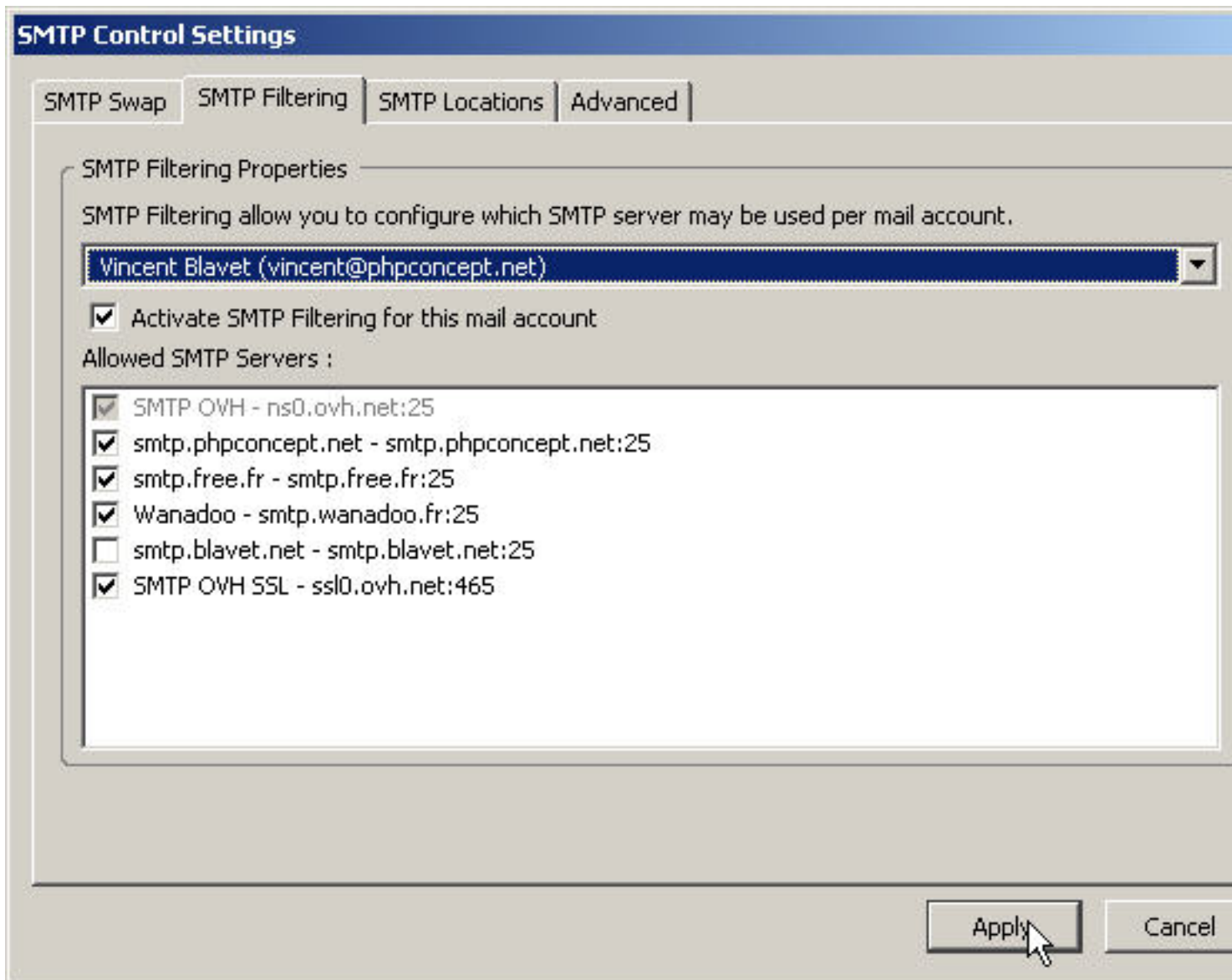
SMTP Control settings can be accessed by the option button in the Add-ons manager, or by selection "SMTP Control Settings ..." in the "Tools -> SMTP Control" popupmenu from

the main thunderbird window, or from the compose message window.



SMTP Filtering

With SMTP Filtering you can select which SMTP server can be used per email account defined in thunderbird. Because SMTP servers are defined globally, enabling SMTP Swap will enable all SMTP servers for all accounts by default. SMTP Filtering allows for customization of supported SMTP servers.



SMTP Location

SMTP Location allows you to define different locations (Home, Office, Customer-office, ...) and associate a default SMTP server per location.

SMTP Control will use network properties to find the location. The following properties will be used :

- Local IP (Internet Protocol) address of your device,
- Remote IP address of your device. It can be the same as the local one, or a different one, for example if your network is protected behind a router with a NAT (Network Address

SMTP Control User Guide 0.5.0

Written by Vincent

Tuesday, 22 December 2009 18:58 - Last Updated Friday, 15 July 2011 12:45

Translation) feature,

- Remote hostname of your device. It is the name of your device seen from Internet (if any),
- Neighboring WiFi Access Point unique identifier (MAC Address),
- Neighboring WiFi Network Name (WiFi SSID).

SMTP Control Settings

SMTP Locations | SMTP Swap | SMTP Filtering | **Advanced**

Current Location | Locations Definition | Advanced Options

Current Location

Discovered Location : Home

Locale Network Properties

Discovered IP Addresses :

192.168.22.132

Remote Network Properties

Remote IP address : 82.239.226.211

Remote Hostname : guy78-3-82-239-226-211.fbx.proxad.net

WiFi Network Properties

Discovered WiFi Access Points :

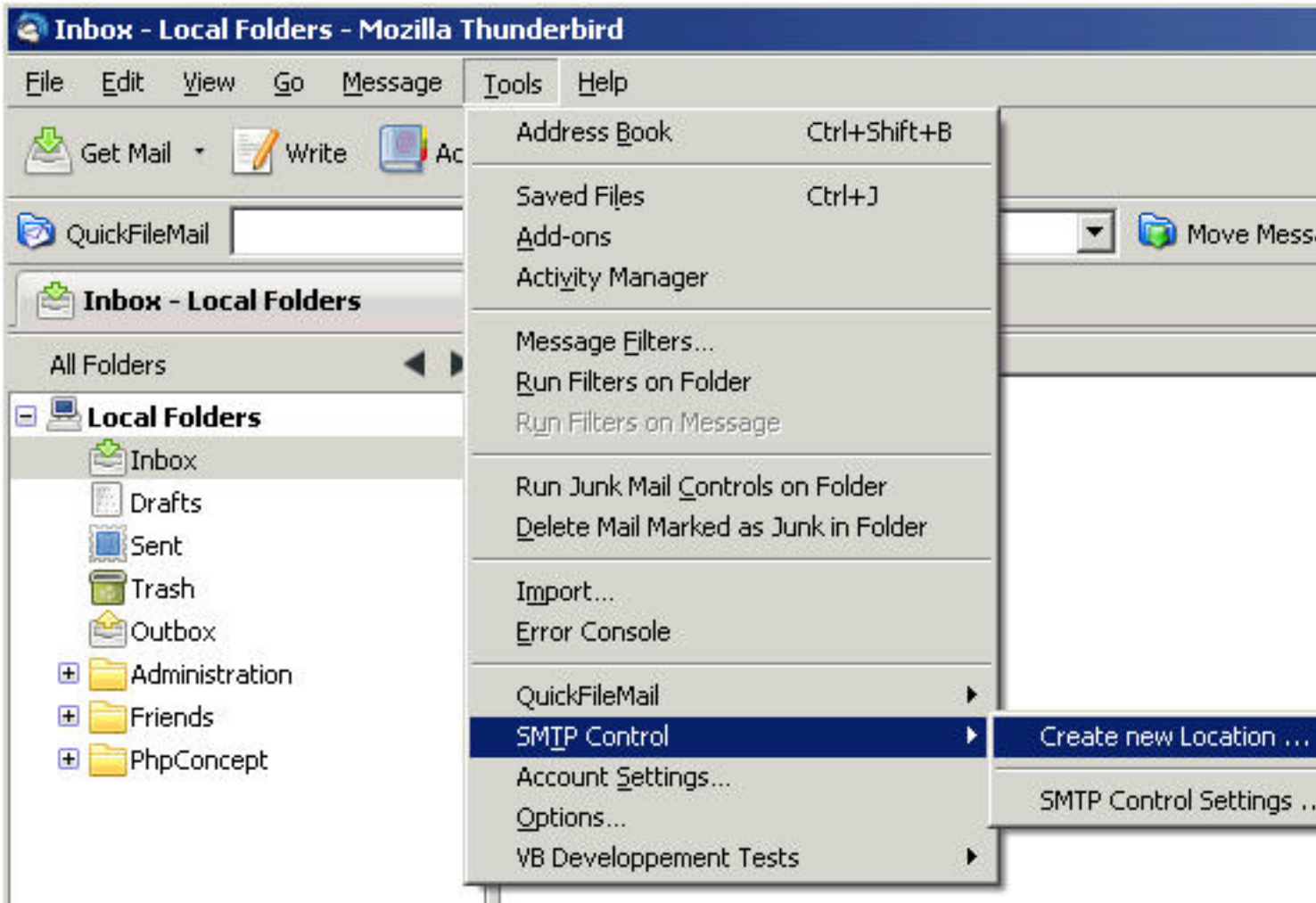
- 00-22-55-83-22-40 - *** - signal:-29db
- 00-21-1b-fd-ab-de - blanel - signal:-31db
- 00-21-1b-fd-ab-dc - blanel-v - signal:-40db
- 00-21-1b-fd-ab-df - blanel-eap - signal:-40db
- 00-1e-13-85-d0-80 - *** - signal:-41db
- d2-16-a3-73-af-b8 - BeddokMaison - signal:-70db

Apply Cancel

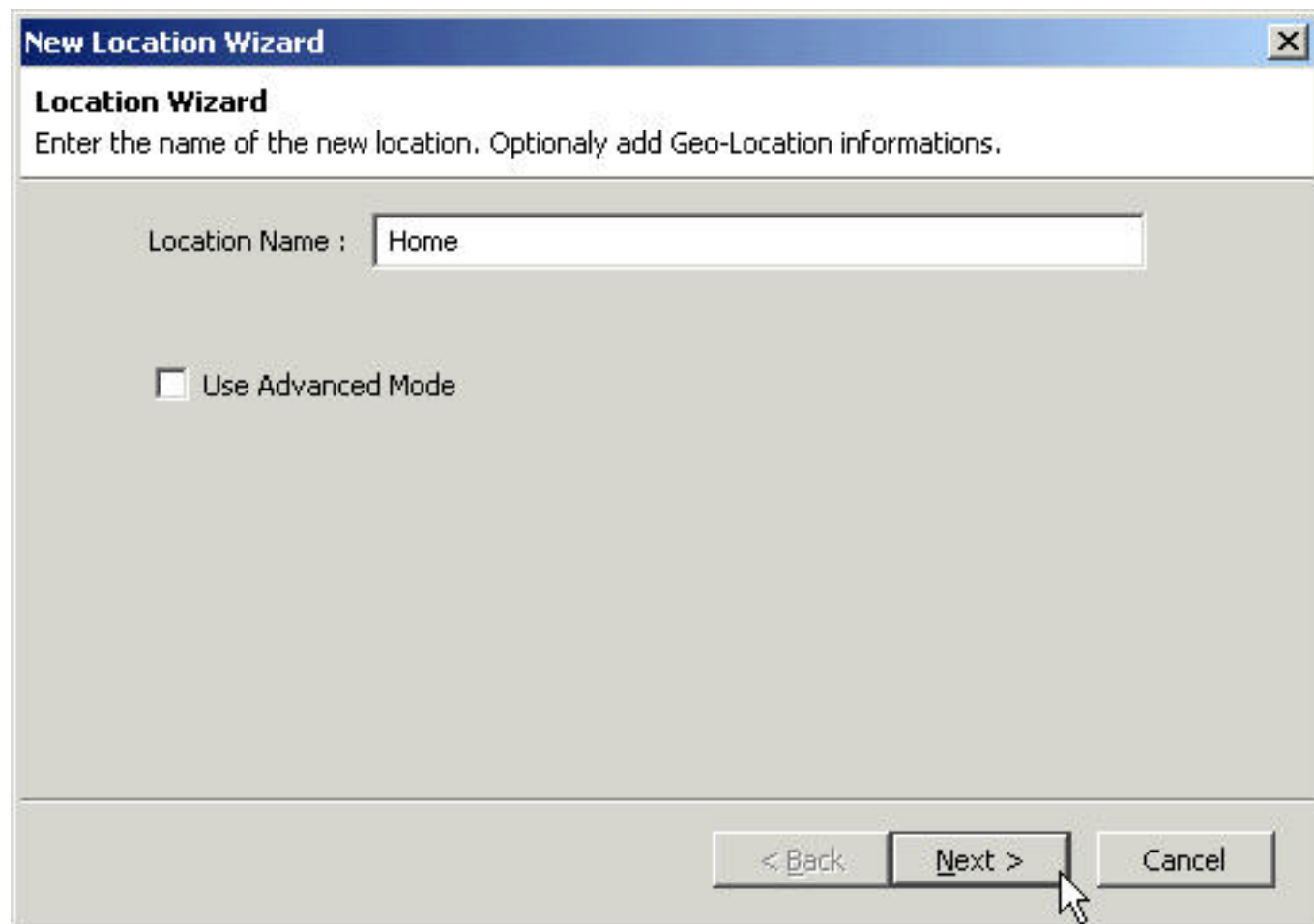
In the "Current Location" tab, you can see the calculated location (here "Home"), the current local IP address, the current discovered remote IP address and hostname, and the list of WiFi Access Points with their SSID Network Names.

Create a new Location - Easy Wizard

The best way to create a new location is the use the "Create new Location ..." wizard. The wizard is launched from the "Tools" -> "SMTP Control ..." menu :

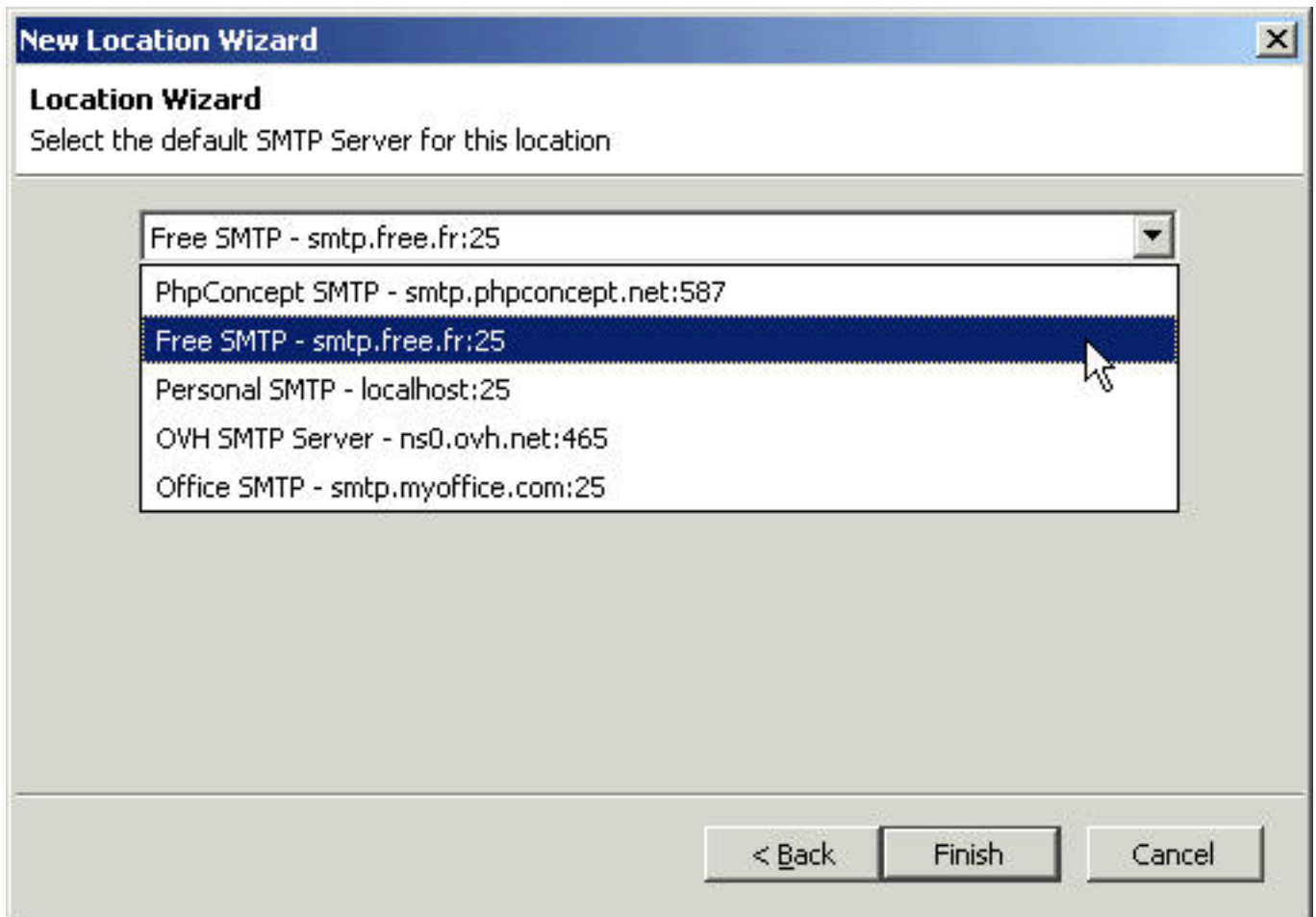


Indicate the name of the new location :



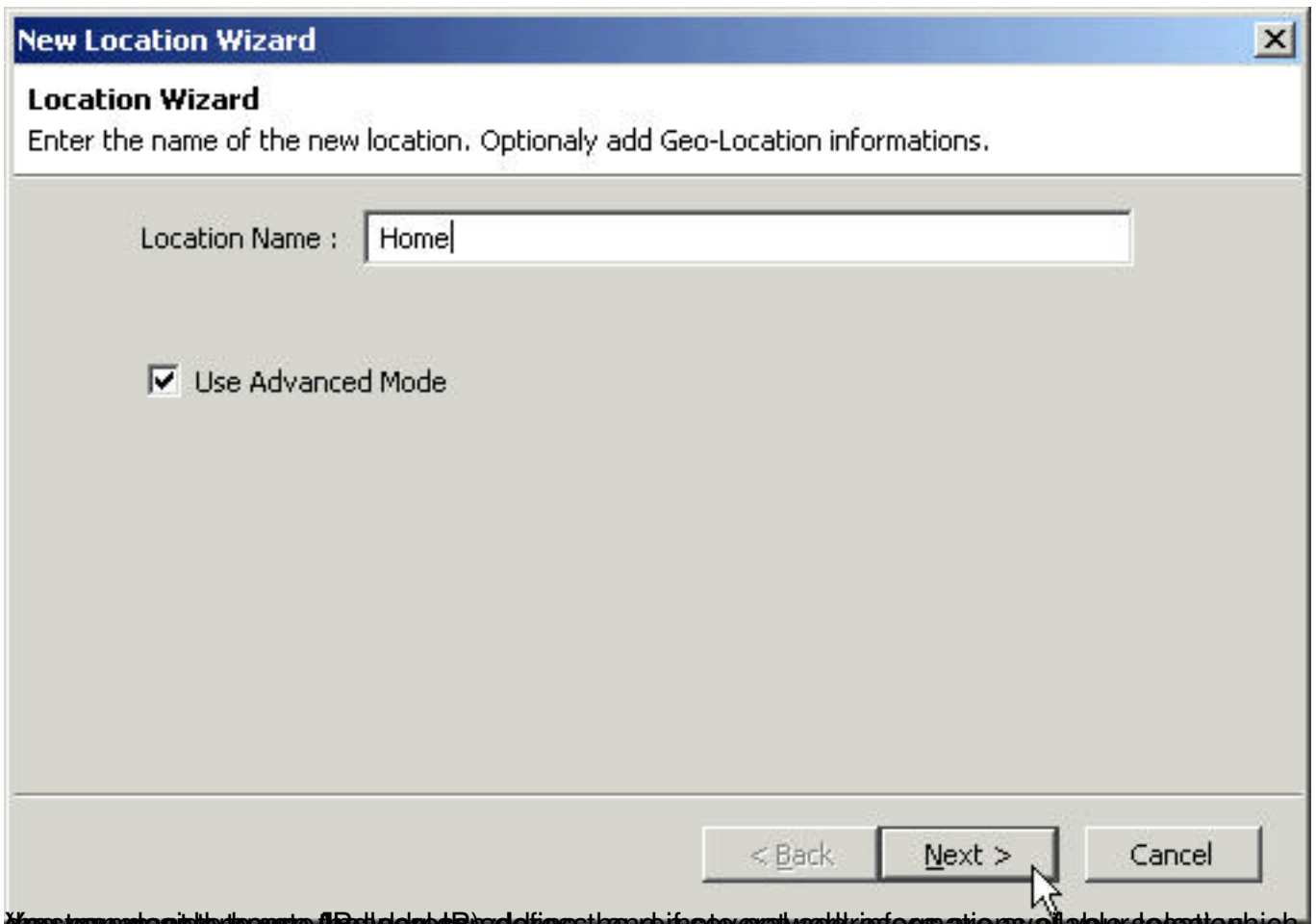
For an easy, and automatic, location creation, do not select the "Use Advanced Mode" checkbox.

Then select the default SMTP Server associated with this location :

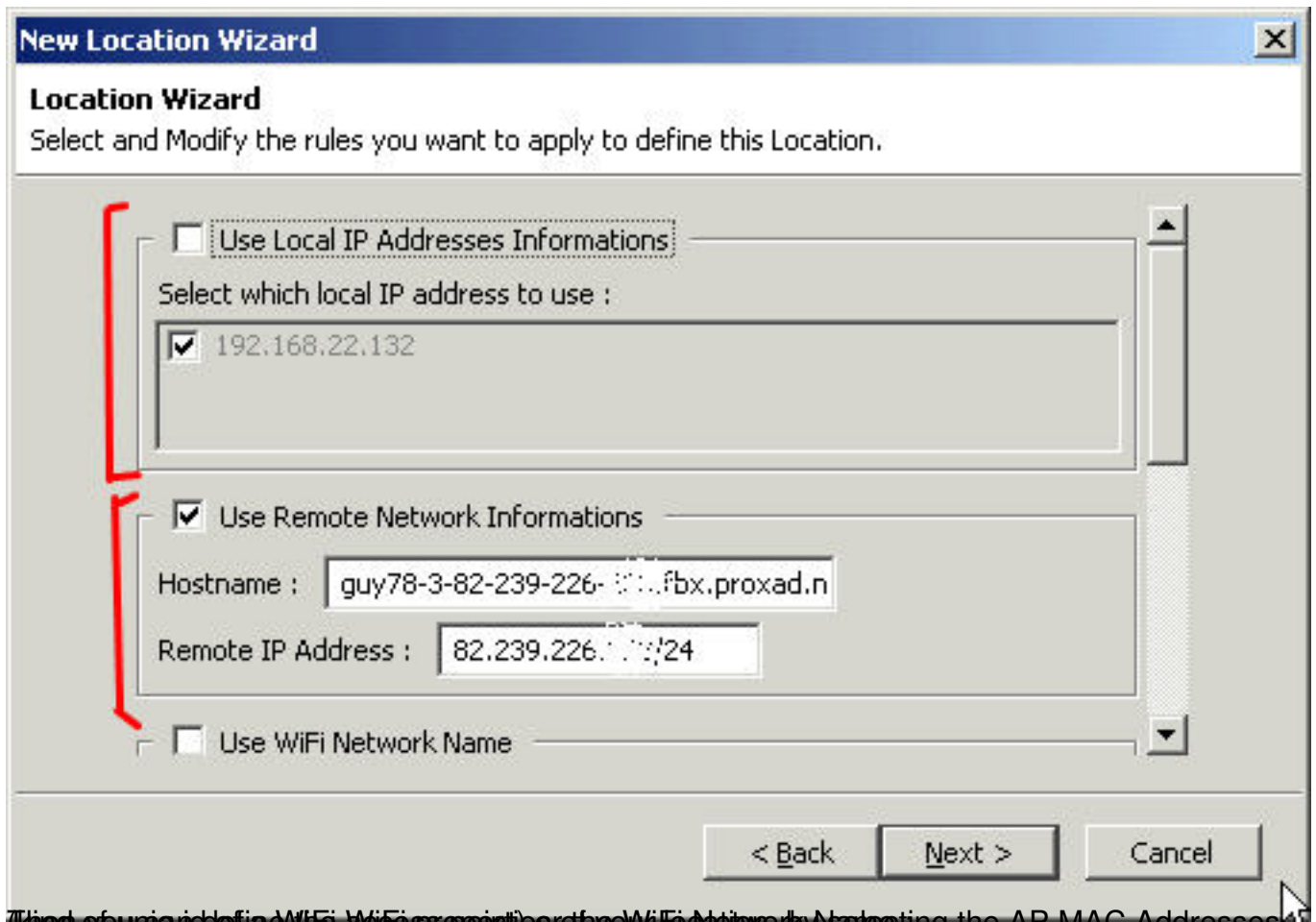


Create a new Location - Advanced Wizard

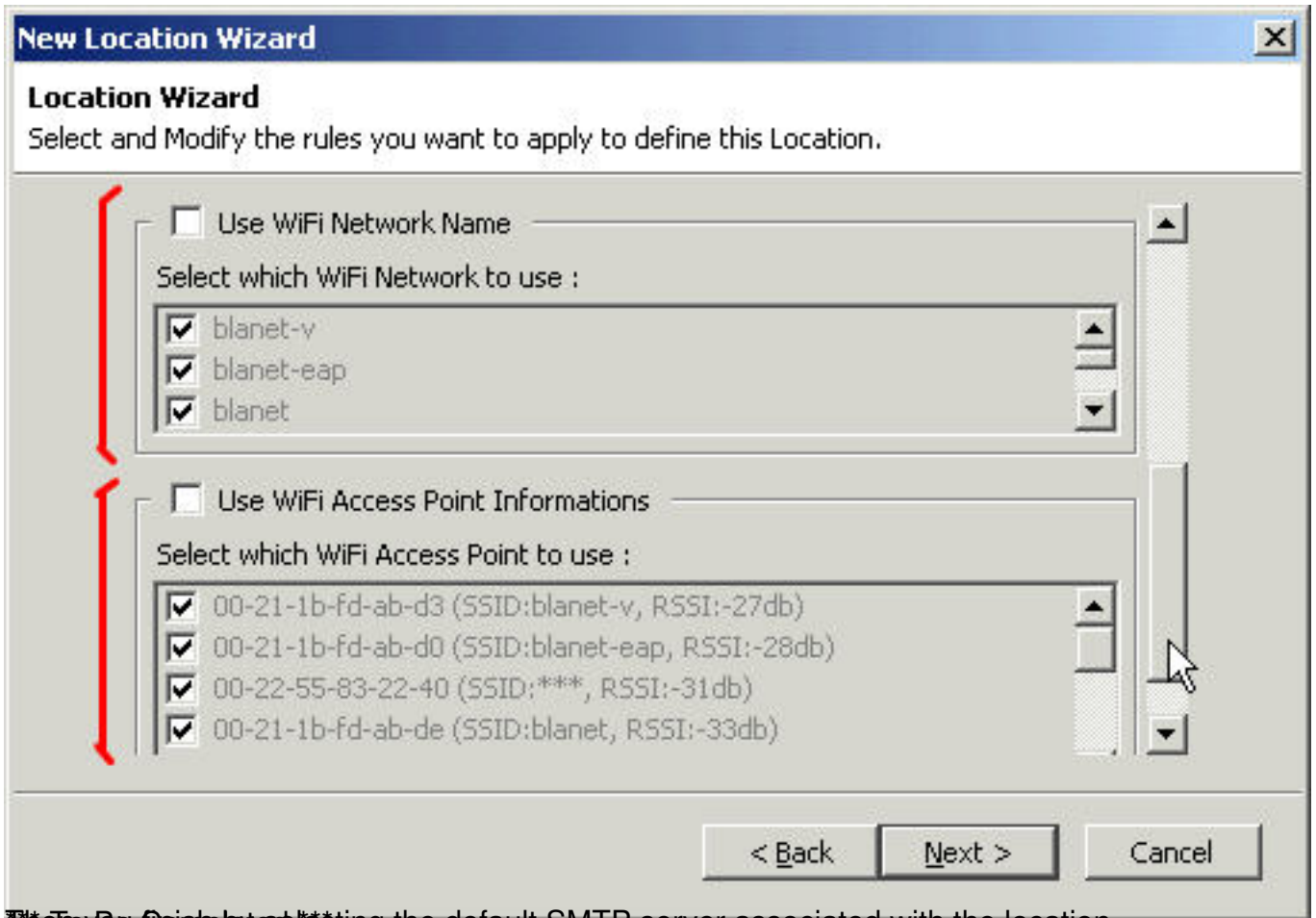
If you want to select which network properties to use to define the location, then select the "Use Advanced Mode" checkbox in the first screen of the wizard :



You can enable the **Use Advanced Mode** checkbox, and if several addresses are available, select which



(This guide defines the WiFi properties for the WiFi Network by selecting the AP MAC Addresses)



The Wizard displays selecting the default SMTP server associated with the location.

Advanced

In the "Advanced" tab you will find the URL to access www.phpconcept.net and other informations.

Archives

[SMTP Control User Guide 0.1.0](#)